

Banner Registered Specialties,
Lanterns, Lamps and Burners
Ontario Lantern & Lamp Co.
Hamilton, Canada, Ca. 1914

Kerosene lamps and lanterns, tubular lanterns,
R.R. lanterns, headlights, station and street lamps

Catalog undated, 48 un-numbered pages plus cover.
Original catalog courtesy of Tom Logan



Catalog digital reprint
images and formatting
copyright 2018 by
The Rushlight Club Inc.

Property of The Rushlight Club Inc.
For academic use and/or research purposes only.
All other use requires the express written
consent of The Rushlight Club Inc.

Commercial use is expressly prohibited.

The Rushlight Club: www.rushlight.org

Complete Catalog

BANNER
REGISTERED
SPECIALTIES

LANTERNS
LAMPS
BURNERS

Ontario Lantern & Lamp Co.,
HAMILTON, CANADA. *Limited.*

COMPLETE LINE OF BANNER SPECIALTIES



Manufactured by
ONTARIO LANTERN AND LAMP CO.
LIMITED
HAMILTON, CANADA

EASTERN OFFICE AND WAREHOUSE:
30 St. Dixier St.
Montreal, Quebec.

MANITOBA OFFICE AND
WAREHOUSE:
56 Albert St., Winnipeg, Man.

BRITISH COLUMBIA OFFICE AND
WAREHOUSE:
365 Water St., Vancouver, B. C.

FOREWORD

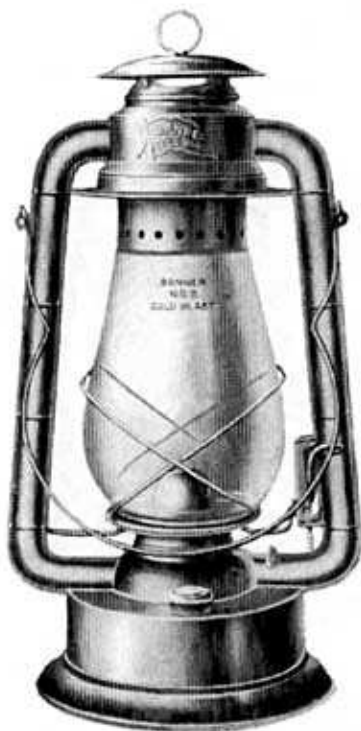
A realization that the Trade would appreciate an "Up-to-Date" Publication dealing with this branch of the Hardware business led to the issue of this booklet.

PART I.

LANTERNS

LAMPS

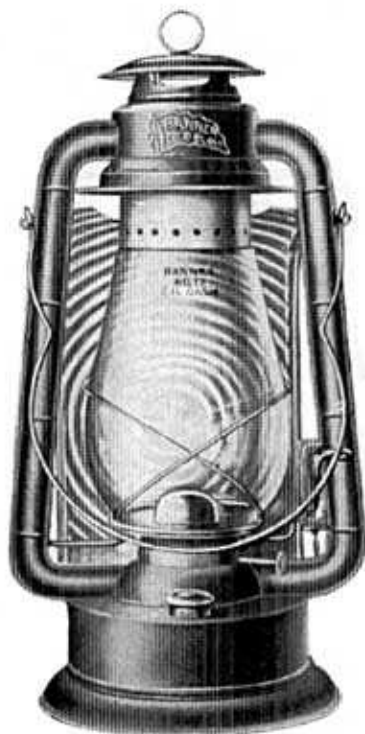
BANNER



List No. 6100

ORIGINAL in every respect, this No. 2 "Cold Blast" Tubular Lantern has found a host of friends. Embracing every good technical lantern feature, viz: reinforced tubes, dome-shaped solderless oil fount, large oil hole, security standing bail, and our patented positive safety lock, etc. It is strong, efficient and handsomely finished. Gives a steady, white light of 10 candle power, that will not blow out in any wind. Fount holds enough coal oil to burn twenty hours.

BANNER



List No. 842

THE "Banner" Dash Lantern has all the latest technical lantern features. It is fitted with a corrugated tin reflector, which throws a strong white light forward. A wire clip is fastened to the back of the reflector so that the lantern can be easily attached to the dashboard of a wagon or buggy. It can also be used as a wall lamp.



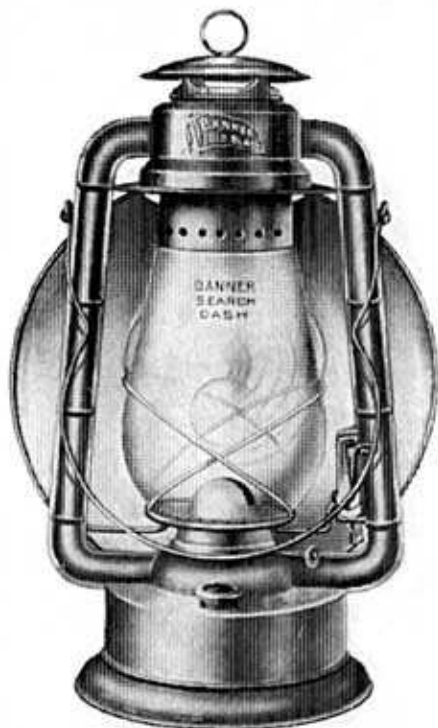
HARVESTER



List No. 950

THE Banner "Harvester" Cold Blast Lantern is the most satisfactory lantern on the market, one of its features being that it will burn 40 hours with one filling. All the latest ideas in "up-to-date" lantern construction are incorporated in this lantern. A great favorite among Threshermen, Ranchmen, etc. Ten candle power. Burns coal oil.

SEARCH-DASH



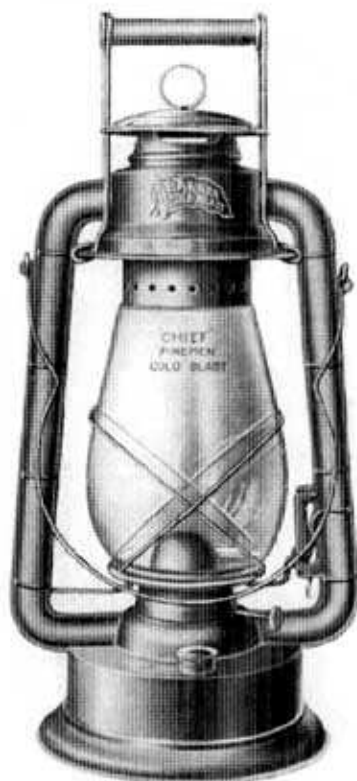
List No. 6500

THE "Search-Dash" Cold Blast Lantern is the most popular Dash Lamp made. It has a dash clip spring, a bail for use as a hand lantern, and also serves as a wall lamp. The "Search-Dash" is equipped with a 10½ inch bright reflector. It has an extra large oil hole, reinforced tubes, patent positive safety lock, security standing bail, dome-shaped solderless oil fount, gives a bright white light of twenty candle power. Fount holds enough coal oil to burn twenty-four hours.

TRADE MARK

BANNER

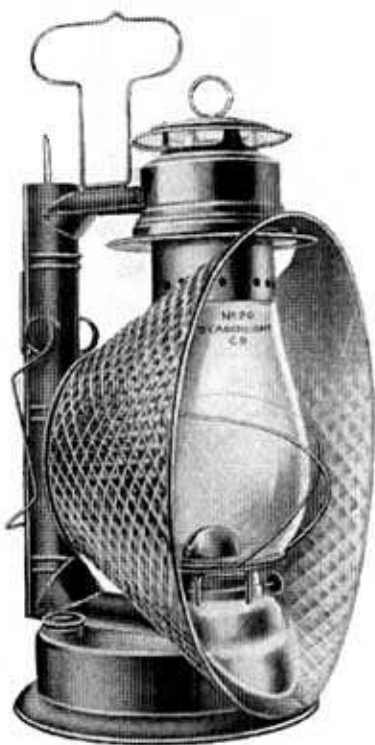
CHIEF



List No. 4182

THE "Chief" Fireman Cold Blast Lantern is our regular No. 2 "Banner" C. B. Lantern made of heavy brass and with special fittings to meet the requirements of a fire lantern. The most dense smoke or sudden and strong draughts will not affect the perfect burning of this lantern.

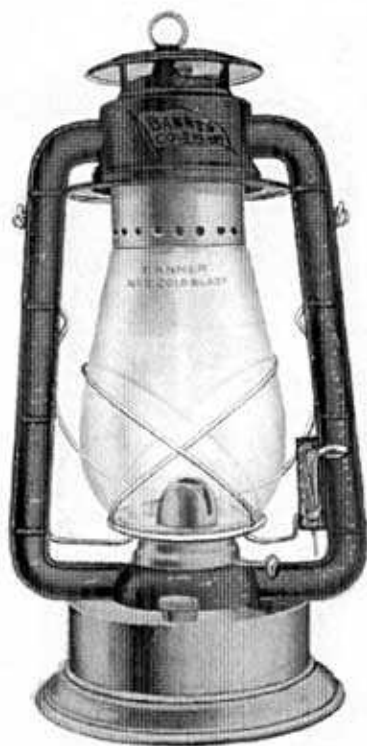
SEARCHLIGHT



List No. 960

THE Banner "Searchlight" Cold Blast Lantern has two new features. The globe tilts to the left of the operator when lighting or trimming, which gives free and easy access to the burner. The well is drawn from one piece of IX Open Hearth Tin Plate, and is equipped with our extra large oil hole, with covered filler cap.

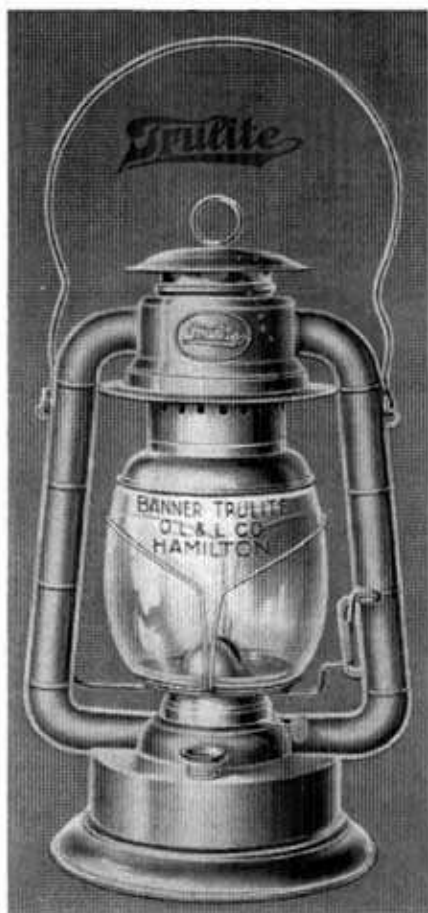
BANNER



List No. 6103

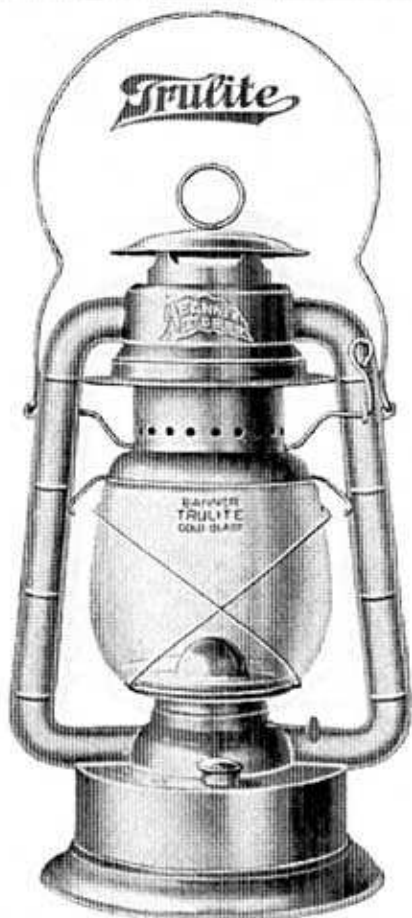
THIS No. 2 "Cold Blast" Tubular Lantern presents a very rich and striking appearance. The Polished Brass Font accentuates the symmetrical lines of the design, and adds to the beauty of the lantern. The Brass Font is impervious to the attacks of rust. Burns brightly in the strongest wind.

Some technical lantern features as List No. 6100



List No. 3151

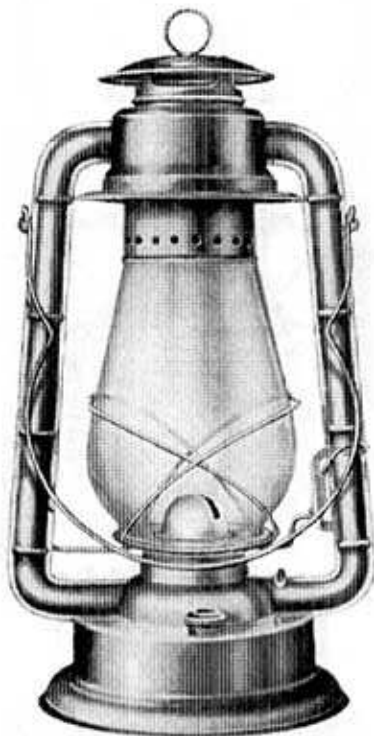
THE *Trullite* Cold Blast Lantern is a step forward in lantern construction. The main feature being the adoption of a new globe which will not break, crack or become smoked. All the latest technical lantern features are embodied in the *Trullite* viz.: dome shaped solderless oil well; reinforced one piece stamped tubes; low lock "Works smooth and easy," and when pressed down, firmly locks globe up. Security standing bail, cling guard and extra large oil hole. The *Trullite* is the most economical lantern made. Gives 12 candle power bright white light. Burns coal oil for 32 hours with one filling.



List No. 3150

THE *Trulite* Cold Blast Lantern is a step forward in lantern construction. The main feature being the adoption of a new globe which will not break, crack or become smoked. All the latest technical lantern features are embodied in the *Trulite* viz.: dome shaped solderless oil well; reinforced one piece stamped tubes; lever at top "Works smooth and easy," and when pressed down, firmly locks globe into place. Security standing bail, cling guard and extra large oil hole. The *Trulite* is the most economical lantern made. Gives 12 candle power bright white light. Burns coal oil for 24 hours with one filling.

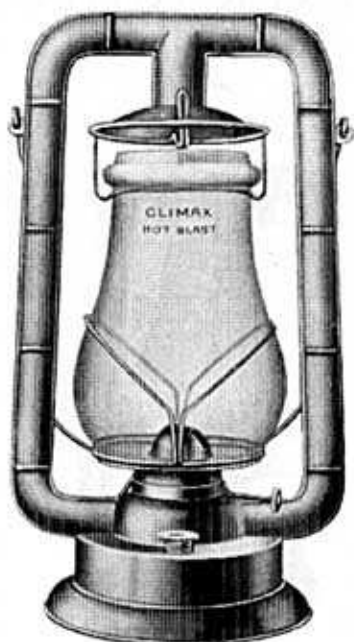
STANDARD



List No. 7165

THE "Standard" Cold Blast Lantern, (popularly known as the No. 02), fills the demand for a satisfactory low-priced lantern that can be sold at a less price than the regular "Banner" line. Has our new No. 2 Steel Burner. Gives a light of 10 candle power. Large oil hole. Reinforced one pieced stamped tubes. Regular inside lift and cling guard. Well holds enough coal oil to burn 20 hours with one filling.

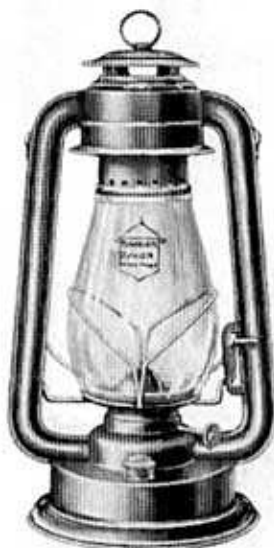
CLIMAX



List No. 3500

THE "Climax" Hot Blast Lantern is the highest type of round stamped tube lanterns. It is a very convenient lantern to fill and trim, having a Patent Hinge Device, which permits the globe to be tilted away from the operator. Gives a steady white light of four candle power in any wind. Fount holds enough oil to burn 18 hours.

BANNER JUNIOR

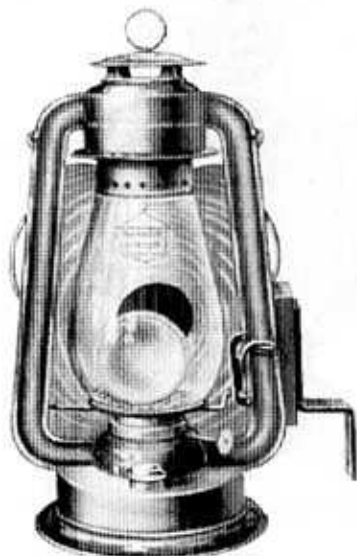


List No. 800

THE "Banner Junior" Cold blast Lantern is by a long way the best of all small lanterns. The light given is even greater than some of the common Cold Blast Lanterns now on the market. Will not blow out. Volume of light by test 6 candle power. Fount holds enough coal oil to burn 13 hours.

TRADE MARK
A BANNER
TRADE MARK

BANNER BUGGY



List No. 900

THE "Banner Buggy" Cold Blast Lantern is compact and handy. It is correctly modeled, beautifully finished in black enamel and a great favorite. A brilliant light is produced, which in turn, is magnified by a bull's eye which is ingeniously set in front of the flame. A red rear warning signal is given by the $1\frac{1}{4}$ inch ruby lens centered in the reflector. Reflected light by test 7 candle power. Fount holds enough coal oil to burn 13 hours.

BANNER



List No. 700

THE "BANNER" Railroad Lantern gives you full control of the light at all times. Absolute protection against light going out in any wind, or when giving signals. Will burn from 16-18 hours with one filling. Light always under control of operator, without removing oil cup or globe. Saves oil; saves globes; wears better and lasts longer than any other railroad lantern made. For the Trainmen, Boatmen, Watchmen, Farmers, Ranchmen, Home or Camp.

CANADA



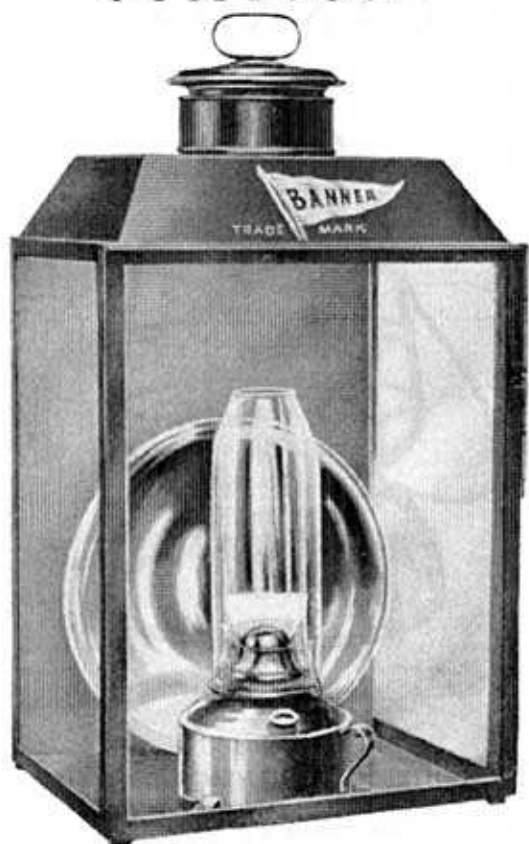
List No. 1200

The Canada Railroad Lantern

HAS SOME CLASS

1. Reinforced Steel Guard Frame.
2. Outside Wick Adjustment.
3. Reversible Oil Pot.
4. Burner Button protected by slotted guard.
5. Slip Burner fits snug into drawn pot.
6. "Never Break" Oil Pot Spring.
7. Guaranteed to give satisfaction.

STATION

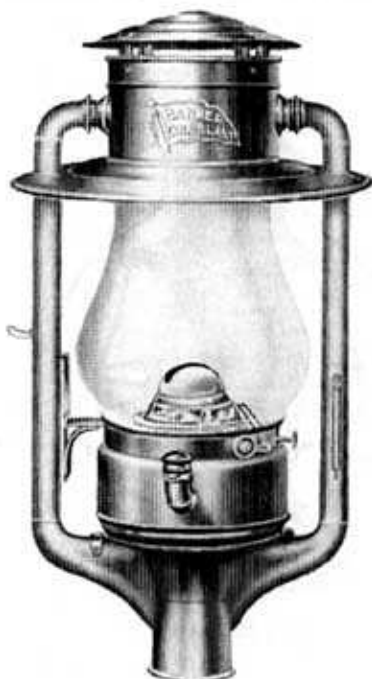


List No. 4100

OUR Square Station Lamps are finished in three sizes of which the No. 4102 is the largest. As they are not tubular, an inside chimney is required. The lamps give a good light and are wind proof. They are adaptable for indoor or outdoor use, may be used for gas by substituting pipe and burner in place of lamp and chimney. Founts hold enough coal oil to burn 14-21 hours.

No. 4100 Takes 7 inch Silver Glass Reflector. Door $8\frac{1}{2} \times 9\frac{1}{4}$
No. 4101 Takes 8 inch Silver Glass Reflector. Door $10\frac{1}{2} \times 11\frac{1}{4}$
No. 4102 Takes 10 inch Silver Glass Reflector. Door $11\frac{1}{2} \times 14\frac{1}{4}$

BANNER

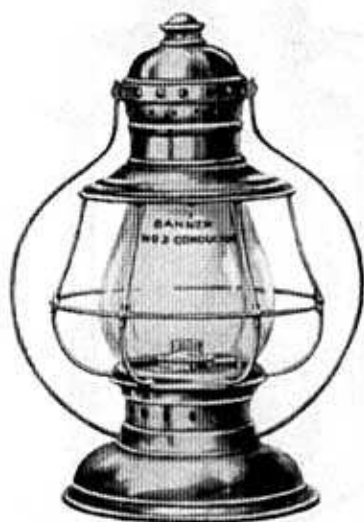


List No. 5100

THIS Street Lamp will burn with a brilliant white light through gales and storms. It is very desirable for suburbs, small towns and villages, summer resorts, docks, drive-ways, etc. By means of an automatic extinguisher with which it is fitted, it may be set by the caretaker to burn 4, 8, 12, 16, 20, or 24 hours, and then go out of its own accord, thus saving the time of a second trip to put out the light. Gives a light of twenty-two candle power. Fount holds enough coal oil to burn twenty-five hours.

TRADE MARK
THE BANNER MARK

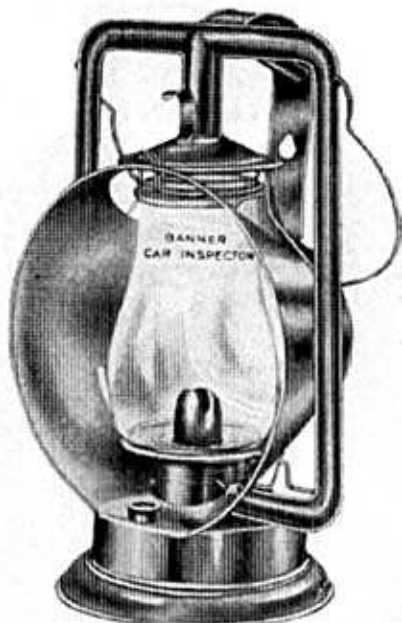
CONDUCTOR



List No. 8100

THE neatest little lantern ever made. Extra heavy and strong. Handsomely finished in polished brass and brass nickel plated. Gives a light of one candle power. Fount holds enough signal oil to burn thirteen hours. The globes are hand made, of the best quality flint glass, and are furnished in white, ruby, green, blue, half blue, half green, or half ruby. Screw cup.

PACIFIC



List No. 7100

THE "Pacific" Car Inspectors' Lamp is a handy and compact lantern. Throws a strong reflected light of seven candle power on the work, and the new rigid handle is comfortable, which ensures the light being thrown at the proper angle, thus preventing the flame from smoking and cracking the globe. It is fitted with a polished hood 6 inches deep, and has a 5 inch Silvered Glass Reflector in the back of hood. Fount holds enough coil oil to burn twenty hours.

TRADE MARK
TRADE MARK

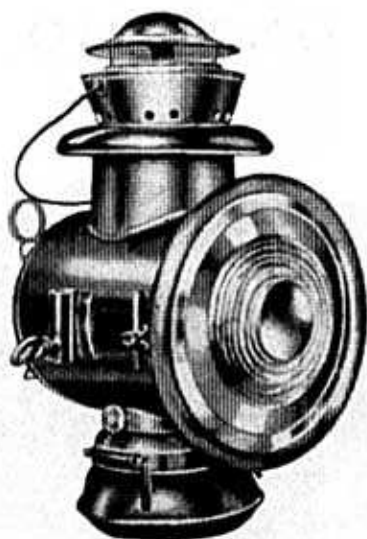
TRACTION ENGINE HEADLIGHT



List No. 9100

THIS lamp was designed and built especially for threshermen's use on Traction Engines. It is fitted with a silver plated reflector and a regular locomotive style of burner, using a circular wick. The result is a strong, powerful, penetrating light, and the draught to the burner is so arranged that it will not blow out in the strongest winds, or jar out in passing over rough roads. The case is built strong, of heavy plate, and is handsomely finished. 10 inch.

JEWEL



List No. 6400

THE best driving lamp ever put on the market, using coal oil. Beautiful in appearance, durably made, producing a brilliant white light that is greatly magnified by a silvered reflector. The strongest gales cannot blow it out; the roughest roads cannot jar it out; it burns steadily and entirely free of smoke and odor. A red rear warning is given by the 1 1/4 inch ruby lens centered back of the reflector. A strong dash clamp is furnished with each lamp for attachment to either side of the vehicle. Four holds enough oil to burn twenty-five hours. Each lamp is packed in a neat carton.

ONTARIO



List No. 2100

THE "Ontario" Candle Lantern is a well made article, admirably adapted for decorative purposes. Will not blow out in any wind. Can be supplied with colored chimneys when so ordered. Packed 1 doz. to a carton, 12 cartons to a case.

STELLA



List No. 1000

A GOOD all Metal Table Lamp, trimmed with our "Regal" Burner, which gives a beautiful, bright light. The base is weighted to prevent the possibility of tipping. The well is double seamed and solderless.

TRADE MARK
THE BANNER
TRADE MARK

POLICE



List No. 763

THE "Banner" Police Lantern is the very best made. Comes up to standard police regulations. Burns lard oil.

UNIVERSAL



List No. 8163

THE "Universal" Table Lamp is one of the quickest sellers we make. It has an independent heavy glass fount that stands into an embossed metal base. Each lamp is trimmed with a B "Banner" Burner. Antique Copper Finish.

UNIVERSAL



List No. 8163

THE Universal Table Lamp is one of the quickest sellers we make. It has an independent heavy glass font that stands into an embossed metal base. Antique Copper Finish. Now made with filler cap and collar.

MURRY



List No. 5647

THE "Murry" Reflector Side Wall Lamp is a greatly improved article. The fount is drawn out of two pieces of IX Open Hearth Tin Plate, and then double seamed. Beautifully finished and trimmed with a B. Banner Burner.

SETTLERS



List No. 967

THE "Settlers" Lamp is the most popular wall lamp on the market. Strong, efficient and of good appearance it finds a ready sale. The reflector is removable.

DANDY



List No. 6152

THE "Dandy" Wall Lamp is something new. Has an independent glass font that fits into a steel guard which protects the lamp from being broken. A bright corrugated tin reflector $5\frac{1}{2}$ inches in diameter is set in line with the flame of a No. 2 Ontario Burner, which throws a strong light within a larger radius. The lamp can be hung on a nail in the wall without removing the reflector. Beautifully finished in black enamel.

LITTLE BOBS



List No. 2171

A NICE little lantern for decorative purposes. A great favorite among the ladies. Gives a light of two candle power. Fount holds enough coal oil to burn six hours.

PART II.

GLOBES

TRADE

BANNER

MARK

STREET LAMP GLOBE



List No. 230

TRADE

BANNER

MARK

BANNER SELECTED GLOBES



List No. 205



List No. 210



List No. 215



List No. 220



List No. 225



List No. 235



List No. 240



List No. 245

TRADE

BANNER

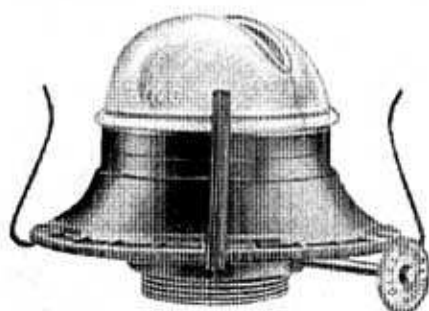
MARK

PART III.

BURNERS

ETC.

BING BURNERS

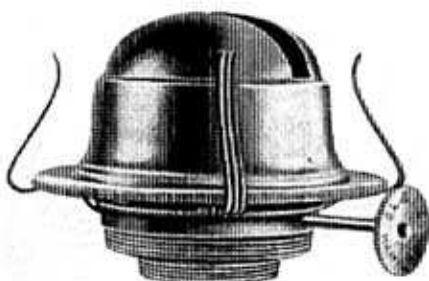


Order No.	Code Word	Size No.	Diameter of Thread	List per Dozen
241	Agawan	1 (A) Bing (Glass Cone)	$\frac{3}{8}$ inch	\$2.80
242	Aloft	2 (B) Bing (Glass Cone)	$1\frac{1}{4}$ inch	3.20

Takes Sun Chimneys and regular flat wicks.

Size No.	In Case	Gross	Net	Measurements
1 (A) Bing	15 doz.	39 lbs.	24 lbs.	18 x 14 x 14
2 (B) Bing	20 doz.	68 lbs.	48 lbs.	24 x 16 $\frac{1}{2}$ x 20 $\frac{1}{4}$

D. BANNER BURNER



Order No.	Code Word	Size No.	Diameter of Thread	List per Dozen
3193	Alomb	3 (D) Banner 2 (B)	$1\frac{1}{2}$ inch	\$2.20

Takes No. 2 (B) Sun Chimney and No. 3 (D) Wick.

Fits No. 2 (B) or No. 3 (D) Collar.

Size No.	In Case	Gross	Net	Measurements
3 (D) Banner	20 doz.	60 lbs.	40 lbs.	24 x 16 $\frac{1}{2}$ x 20 $\frac{1}{4}$

BANNER BURNERS



Order No.	Code Word	Size No.		Diameter of Thread	List per Dozen
780	About	0 (E)	Banner	$\frac{3}{8}$ inch	\$0.56
781	Abcess	1 (A)	Banner	$\frac{3}{8}$ inch	.90
782	Ajar	2 (B)	Banner	$1\frac{1}{4}$ inch	1.26

Take Sun Chimneys and Regular Flat Wicks

Size No.		In Case	Gross	Net	Measurements
0 (E)	Banner	25 doz.	25 lbs.	16 lbs.	$23\frac{1}{2} \times 12\frac{1}{2} \times 11\frac{1}{4}$
1 (A)	Banner	50 doz.	75 lbs.	52 lbs.	$29 \times 26 \times 13$
2 (B)	Banner	50 doz.	95 lbs.	70 lbs.	$33\frac{1}{2} \times 28 \times 13\frac{1}{2}$

ONTARIO BURNERS



Order No.	Code Word	Size No.		Diameter of Thread	List per Dozen
881	Acrid	1 (A)	Ontario	$\frac{3}{8}$ inch	\$0.85
882	Acme	2 (B)	Ontario	$1\frac{1}{4}$ inch	1.06

Take Sun Chimneys and Regular Flat Wicks

Size No.		In Case	Gross	Net	Measurements
1 (A)	Ontario	50 doz.	73 lbs.	50 lbs.	$29 \times 26 \times 13$
2 (B)	Ontario	50 doz.	90 lbs.	65 lbs.	$33\frac{1}{2} \times 28 \times 13\frac{1}{2}$

SUN
BANNER

SPREADER TYPE HIGH CONE BURNER

FLAT GUARD PERFECT COMBUSTION

SMOKELESS, NON-EXPLOSIVE, OIL SAVING
MUST BE USED TO BE APPRECIATED
WILL NOT BREAK LAMP CHIMNEY.

BRASS QUEEN BURNER

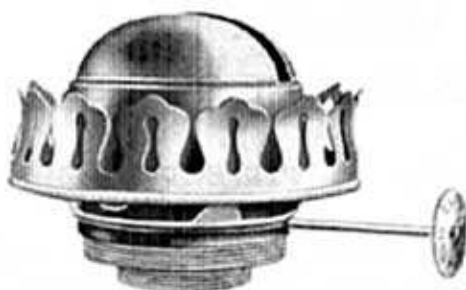


Order No.	Code Word	Size No.	Diameter of Thread	List Per Dozen
442	Snuffer	2 (B) Brass Queen	1 1/4 Inch	\$2.00

Take Sun Chimneys and Regular Flatwick.

Size	In Case	Gross	Net	Measurements
2 (B) Brass Queen	50 dozen	57 lbs.	38 lbs.	32 1/2 x 18 x 21

REGAL BURNER



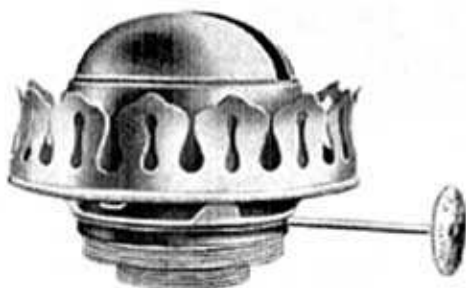
Order No.	Code Word	Size No.		Diameter of Threads	List per Dozen
4193	Aged	3	(D) Regal	2 (B) 1 1/4 inch, 3 (D) 1 1/2 inch	\$2.40

Takes No. 2 (B) Sun Chimney and No. 3 (D) Wick.
Fits No. 2 (B) or No. 3 (D) Collar.

Size No.	In Case	Gross	Net	Measurements
3 (D) Regal	20 dozen	60 lbs.	40 lbs.	24x16 1/2 x 20 1/4

CLIMAX BURNER

(SLIP GALLERY)



Order No.	Size No.	Code Word		Diameter of Threads	List per Dozen
222	3	Agva	(D) Climax	2 (B) 1 1/4 inch, 3 (D) 1 1/2 inch	\$4.50

Takes No. 2 (B) Sun Chimney and No. 3 (D) Wick.
Fits No. 2 (B) or No. 3 (D) Collar

Size No.	In Case	Gross	Net	Measurements
3 (D) Climax	30 dozen	100 lbs.	78 lbs.	32 1/2 x 18 x 21

CANADA BURNERS



Order No.	Code Word	Size No.		Diameter of Thread	List per Dozen
941	Alsac	1 (A)	Canada	$\frac{3}{8}$ inch	\$0.86
942	Alet	2 (B)	Canada	$1\frac{1}{4}$ inch	1.16

Takes Sun Chimneys and Regular Flat Wicks

Size No.		In Case	Gross	Net	Measurements
1 (A)	Canada	50 doz.	73 lbs.	50 lbs.	29 × 26 × 13
2 (B)	Canada	50 doz.	90 lbs.	65 lbs.	33½ × 28 × 13½

SECURITY BURNERS



Order No.	Code Word	Size No.		Diameter of Thread	List per Dozen
421	Amo	1 (A)	Security	$\frac{3}{8}$ inch	\$1.26
422	Amat	2 (B)	Security	$1\frac{1}{4}$ inch	1.66

Takes Sun Chimneys and Regular Flat Wicks

Size		In Case	Gross	Net	Measurements
1 (A)	Security	25 doz.	39 lbs.	27 lbs.	29 × 13 × 13½
2 (B)	Security	25 doz.	50 lbs.	35 lbs.	33½ × 14 × 15

CROWN BURNER



Order No.	Code Word	Size No.	Diameter of Thread	List per Dozen
109	Rceby	O (E)	$\frac{3}{8}$ inch	\$0.84

Takes Crown Chimney and No. (E) Flat Wick.

NUTMEG BURNER



Order No.	Code Word	Size No.	Diameter of Thread	List per Dozen
1122	Aboard	O O (O)	$\frac{1}{4}$ inch	\$1.10

Takes Nutmeg Chimney and Wick.

LARD OIL BURNERS



Order No.	Code Word	Size No.		Extreme Length of Shaft	Diameter of Thread	Width of Wick	List per Dozen
750	Aloku	1	L.O.R.	1 1/2 inch	3/8 inch	3/8 inch	\$0.60
751	Agara	1	L.O.R.	1 3/4 inch	3/8 inch	3/8 inch	1.30
752	Agra	2	L.O.R.	1 3/4 inch	1 1/4 inch	3/8 inch	1.30
753	Agus	2	L.O.R.	2 inch	1 1/4 inch	3/8 inch	1.30

Six Dozen in Box. Net Weight 17 lbs., 50 dozen.

SIGNAL NO CHIMNEY BURNER

AN IDEAL BURNER FOR SWITCH LAMPS. FOR KEROSENE
OR COAL OIL



Order No.	Code Word	Size No.		Extreme Length of Shaft	Diameter of Thread	Width of Wick	List per Dozen
711	Amsum	1 (A)	Signal S.S.	1 3/4 inch	3/8 inch	3/8 inch	\$2.00
712	Arian	1 (A)	Signal L.S.	2 inch	3/8 inch	3/8 inch	2.00

Size No.	In Case	Gross	Net	Measurements
1 (A) Signal	50 dozen	55 lbs.	40 lbs.	25x14 1/2 x 11 3/4

An additional charge will be made for Burners when furnished with Ratchet shaft of special length.

NO CHIMNEY LANTERN BURNERS

FOR KEROSENE OR COAL OIL

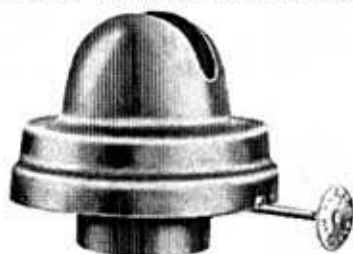
CALLENDER BURNERS



Order No.	Code Word	Size No.	Material	Extreme Length of Shaft	Diameter of Thread	Height Over All	List per Dozen
3250	Across	1 (A)	Callender, S.S.	1 1/4 inch	3/8 inch	2 inch	\$1.30
3251	Afire	1 (A)	Callender, L.S.	2 inch	3/8 inch	2 inch	1.30

Size No.	In Case	Gross	Net	Measurements
1 (A) Callender	50 doz.	55 lbs.	40 lbs.	25 x 14 1/2 x 11 1/4

TUBULAR LANTERN BURNERS



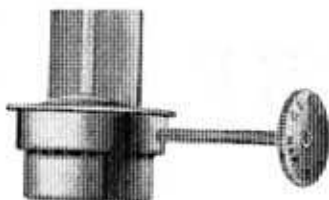
No. Order	Code Word	No. Size	Material	Extreme Length of Shaft	Slip Bottom Diameter of	Size Wick	Dozen List per
3980	Anlar	0	Tubular, H.B.	2 1/4 inch	1 1/2 inch	3/8 inch	\$1.00
3981	Amet	1	Tubular, C.B.	2 1/4 inch	1 1/2 inch	3/8 inch	1.00
3982	Amas	2	Tubular, C.B.	3 inch	1 3/4 inch	3/8 inch	1.70

Size No.	In Case	Gross	Net	Measurement
0 Tubular	25 doz.	36 lbs.	22 lbs.	29 x 11 1/2 x 8 3/4
1 Tubular	25 doz.	36 lbs.	22 lbs.	29 x 11 1/2 x 8 3/4
2 Tubular	25 doz.	50 lbs.	36 lbs.	38 1/4 x 13 1/2 x 11

An additional charge will be made for Burners when furnished with Ratchet Shaft of special length.

RAILROAD BURNER

(SPECIAL)



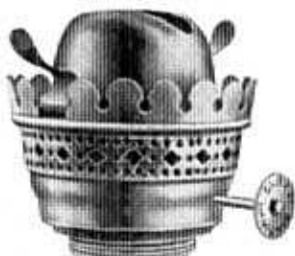
Order No.	Code Word	Size No.	Extreme Length of Shaft	Diameter of Thread	Width of Wick	Lot per Dozen
999	Axes	Canada (Slip Collar)	2 $\frac{3}{4}$ inch	1 $\frac{1}{4}$ inch	$\frac{3}{8}$ inch	\$2.00
998	Akin	Banner	1 $\frac{3}{4}$ inch	1 $\frac{1}{4}$ inch	$\frac{3}{8}$ inch	\$2.00

Packed in Bulk.

DOUBLE SPRING CAR BURNER

(HEAVY OIL BURNER)

FOR RAILROAD AND STEAMBOAT USE



Order No.	Code Word	Size No.	Diameter of Thread	Takes Collar No.	Takes Wick No.	Takes Chimney No.	Lot per Dozen
2182	Ajove	2 (B) Car	1 $\frac{1}{4}$ inch	2 (B)	2 (B)	2 Lip	\$4.50
In Case		Genas	Net		Measurements		
25 dozen		76	62		38 $\frac{1}{2}$ x 13 $\frac{1}{2}$ x 11		



PART I.

LANTERNS

LAMPS

List No.	Code Word	Only Finish	Std. Package	Gross Weight	Measurements
6100	Denote	Bright Tin	½ Doz. Carton	19	18 x16 x12
6101	Dent	Enamel Red	½ Doz. Carton	19	18 x16 x12
6102	Dicator	Bright Tin Brass Well	½ Doz. Wood	34	18 x16 x18
6103	Dig	Enamel Red Brass Well	½ Doz. Wood	34	18 x16 x18
6104	Diaphan	Coppered	½ Doz. Carton	19	18 x16 x12
6105	Diet	Solid Brass	½ Doz. Wood	34	18 x16 x18
842	Rucnom	Bright Tin	½ Doz. Wood	35	24 x16½ x16
843	Rubin	Enameled Red	½ Doz. Wood	35	24 x16½ x16
6500	Soal	Enameled Red	½ Doz. Wood	38	25½ x16½ x17½
4182	Elvest	Enam'd Red Brass Well	½ Doz. Wood	35	20½ x16 x18
4183	Enilgme	Solid Brass	½ Doz. Wood	35	20½ x16 x18
950	Onward	Bright Tin	½ Doz. Carton	20	18 x18 x14
951	Ononda	Enameled Red	½ Doz. Carton	20	18 x18 x14
960	Wormk	Enameled Red	½ Doz. Wood	42	27½ x17 x20
7165	Cheek	Plain Tin	½ Doz. Carton	19	18 x16 x12
3150	Hank	Bright Tin	½ Doz. Carton	17½	18 x14½ x12
800	Fine	Solid Brass	½ Doz. Carton	15	19 x13 x13
801	Frace	Solid Brass N. P.	1 Doz. Carton	15	19 x13 x13
900	Road	Black Enamel	½ Doz. Wood	24	15¼ x16 x17½
9100	State	Black Enamel	1 Only	32	22 x13 x10
9145	Gadder	Brass N. P.	1 Doz. Wood	44	3½ Cubic Feet
763	Zero	Black Enamel	2 Doz. Wood	45	3½ Cubic Feet
5647	Hasp	Black Enamel	1 Doz. Carton	13½	18 x17½ x11½
7100	DeBay	Bright Tin	½ Doz. Wood	33	3½ Cubic Feet
2100	Rustle	Lacquered	½ Gross Wood	25	23½ x14½ x37
3500	Marnous	Plain Tin	1 Doz. Wood	38	27½ x13 x19
3501	Murco	Enameled Red	1 Doz. Wood	38	27½ x13 x19
1000	South	Nickle Plated	1 Doz. Carton	22	20 x17½ x14
1001	Sambo	Antique Copper	1 Doz. Carton	22	20 x17½ x14
2171	Quin	Plain Tin	1 Gross Wood	108	24 x21½ x30
2172	Quig	Antique Copper	1 Gross Wood	108	24 x21½ x30
2173	Quorum	Solid Brass	1 Gross Wood	108	24 x21½ x30
700	Fere	Retinned	1 Doz. Wood	55	16 x22 x24½
1200	Firefly	Retinned	1 Doz. Wood	55	16 x22 x24½
9142	Hand	Enameled Green	1 Only Wood	27	3½ Cubic Feet
6400	Doeng	Nickle Plated	½ Doz. Wood	35	2½ Cubic Feet
6401	Dose	Black Enamel	½ Doz. Wood	35	2½ Cubic Feet
6152	Loco	Black Enamel	1 Doz. Carton	17	17 x20 x13½
967	Zenith	Blue Lacquer	1 Doz. Carton	14	17½ x16 x14
8163	Zodiac	Antique Copper	3 Doz. Carton	58	26½ x20 x20
4100	Hix	Japan Blue	1 Each Wood	12	1½ Cubic Feet
4101	Hax	Japan Blue	1 Each Wood	15	2 Cubic Feet
4102	Handex	Japan Blue	1 Each Wood	24	2½ Cubic Feet



TELEGRAPH CODE

CUSTOMERS are advised to make use of our code words, as far as possible, when telegraphing for goods and requesting quotations or information relative to shipments of orders, as, by a little ingenuity in arranging the message, from thirty to fifty words can be transmitted at the price of a ten-word message, and experience has shown that the use of code words reduces the liability of errors. Telegrams received in code will be answered in the same manner but not otherwise.

Below we give a number of code words representing business phrases and sentences which are to be used in connection with code words given in the back of the catalogue.

ORDERS AND QUESTIONS

CODE WORD
LEASEX Enter order and ship by express.
LEASEPRATE Enter order and ship by freight.
LEASMALE Enter order and ship by mail.
LEASCHEAP Enter order and ship cheapest way.
LEASNORT Ship by express immediately.
 Apply against order which you now have.
LEASPACK Ship by freight immediately.
 Apply against order which you now have.
LEASTOP Ship by mail immediately.
 Apply against order which you now have.
LEARVOW Ship cheapest way immediately.
 Apply against order which you now have.
LEARNED Prepay charges.
LECTURED Send C. O. D. by express.
LAADRAFT Ship by freight with draft attached to bill of lading.
LASHED Telegraph reply soon as possible.

CODE WORD
LEASEHOLD Ship by express.
LEASEHOLDER Ship by fast freight.
LEASEHUT Ship by mail.
LEAVEN Ship cheapest way.
LEASE Ship immediately.
LEASED Ship as soon as possible.
LEASH Ship quickest route.
LEASING When was order shipped? If it has not been shipped when will you ship? Rush all you can.
 Add to order No.
LEAKING Cancel order No.
LEARY Duplicate order No.
LEEWARD Hold for instructions order No.
LEAFED Change Order No.
LECTURE Send tracer immediately for shipment of.
LEAVENED This is very important.
LEGALLY How soon can you ship?
LEGISLATING What substitution can you make?
LEGISLATOR Quote by telegraph.
LEGATION Quote by next mail.
LEGENE

ANSWERS

LESSENING Have entered your order.
LAUNCH Your financial standing being unknown to us we must have references or permission to ship C. O. D.
LAUNCHED Your financial standing being unknown to us we must have references or permission to ship with draft attached to bill of lading.
LENIENCY Have no in stock.
LEOPOLS We are shipping to-day your order.
LESSEN Your order was shipped.
LEPROUS Your order will be shipped.
LEPROSY Your order will be completed.
LAADAH Will advise later regarding balance.
LETHARGY Telegraph shipping instructions for your order No....
LENIENT First shipment will be made.....

LEOPARD Unable to ship goods at time promised.
LETTUCE Can deliver part of your order at once. Shall we ship portion or hold until we can make one complete shipment?
LEONARD Have sent tracer as requested.
LEONORA Too late to cancel order.
LENAPE Can make immediate shipment by substituting.....
LENDER Can ship at once from stock, if advised immediately.
LENGHEN Can ship in
LENGVE Can ship at once and balance.....
LENGTHENING Can ship within one week from receipt of order if advised at once.
LENGHTILY Can ship within two weeks from receipt of order if advised at once.
LENKAT This promise is condition #1 on the order reaching us within twenty-four hours.



THIS CATALOG WAS COMPILED BY
JAMES W. MONCUE
PRINTED BY
THE REID PRESS, LIMITED, HAMILTON.

Reprinted by Actinolite Graphics 2008